

Parts List for Size 5 CFCB Clutch-Brakes

Serial and model numbers from nameplate are required when ordering replacement parts.

2-13-4231-00 standard

2-13-4231-04 standard, case hardened armatures

2-13-4231-08 spring release

See reverse side for Tor-ac model.

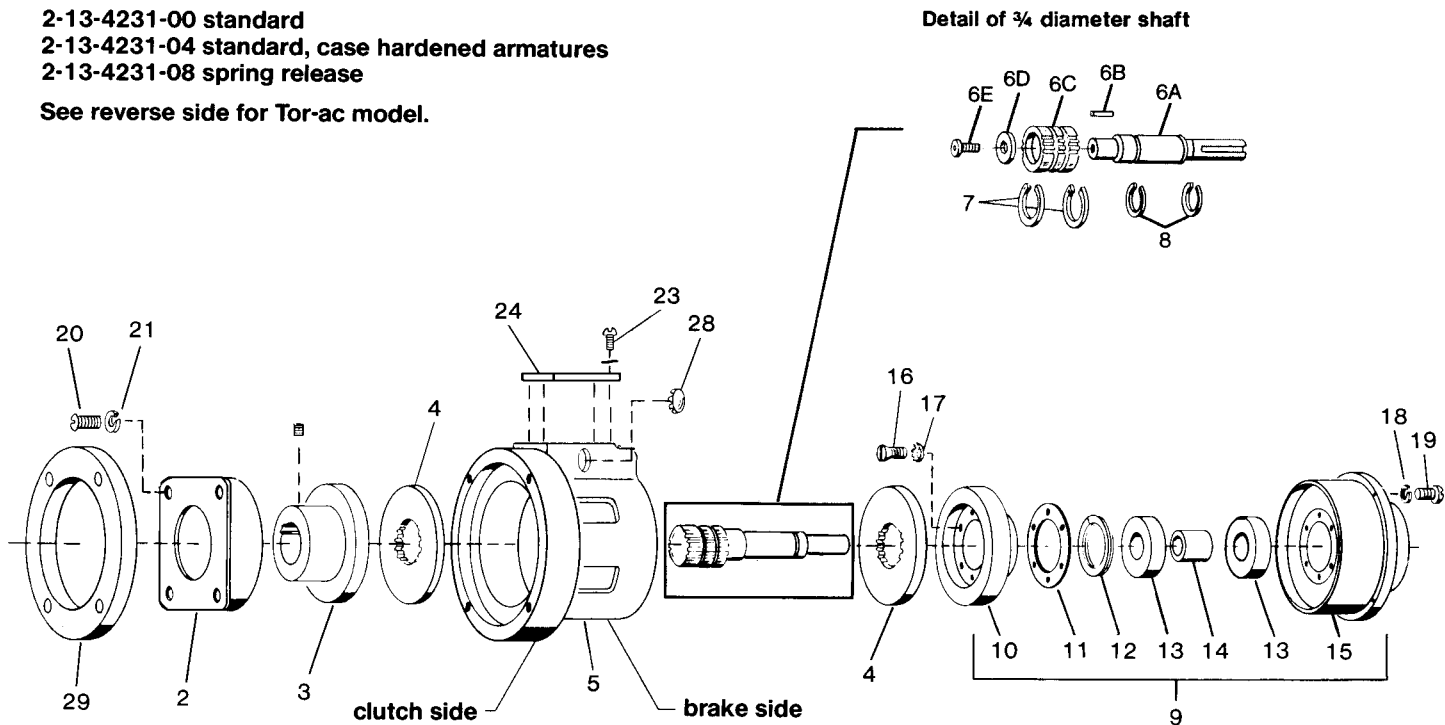


TABLE A

Item No.	Description	Part Number	Qty.
2	Magnet body and coil assembly - clutch 90-100 volts, DC 24-28 volts, DC 12 volts, DC 6 volts, DC	5-04-0050-01-01J	1
		5-04-0050-01-01E	1
		5-04-0050-01-01C	1
		5-04-0050-01-01B	1
3	Drivehub (3/8 diameter) Drivehub (7/8 diameter)	5-30-0425-06-10L	1
		5-30-0425-06-100	1
4	Armature	8-405-076-03	2
5	Housing	8-443-010-01	1
6A	Shaft - brake	8-464-010-03	1
6B	Key	9-50-0813-00	1
6C	Hub	8-411-102-08	1
6D	Belleville washer	9-71-2081-01	1
6E	Screw	9-16-3008-00	1
7	Retaining ring	9-03-0013-00	2
8	Retaining ring	9-03-0033-01	2
9	Brake assembly (includes items 10 through 17) 90-100 volts, DC 24-28 volts, DC 12 volts, DC 6 volts, DC	5-40-5050-01-01J	1
		5-40-5050-01-01E	1
		5-40-5050-01-01C	1
		5-40-5050-01-01B	1
10	Friction face assembly	5-30-0417-01	1
11	Spacer	8-455-118-00	1
12	Retaining ring	9-03-0080-00	1
13	Ball bearing	9-01-0023-00	2
14	Spacer	8-455-117-00	1

TABLE A (continued)

Item No.	Description	Part Number	Qty.
15	Magnet body and coil assembly - brake 90-100 volt, DC 24-28 volts, DC 12 volts, DC 6 volts, DC	5-04-0050-02-01J	1
		5-04-0050-02-01E	1
		5-04-0050-02-01C	1
		5-04-0050-02-01B	1
16	Flat head screw	9-11-4608-00	6
17	Lock washer	9-45-0726-00	6
18	Lock washer	9-45-0327-00	6
19	Screw	9-10-2710-00	6
20	Round head screw	9-10-3010-00	4
21	Lock washer	9-45-0330-00	4
23	Screw	9-25-7008-00	4
24	Nameplate	-	1
28	Snap-in blank	9-61-1150-00	1
29	Adapter - clutch side	8-445-502-00	1
not shown	Installation and Maintenance Sheet (CFCB)	8-078-800-03	1

TABLE B

For spring release use:		
Release spring	8-404-808-04	2 required
Cap screw	9-16-2705-00	6 required
Lock washer	9-45-0327-00	6 required

TABLE C

For case hardened armatures use in place of item 4:		
Armature	8-405-076-12	2 required

Parts List for Size 5 CFCB Tor-ac® Clutch-Brakes

Serial and model numbers from nameplate are required when ordering replacement parts.

2-13-4271-00 standard
2-13-4271-01 spring release

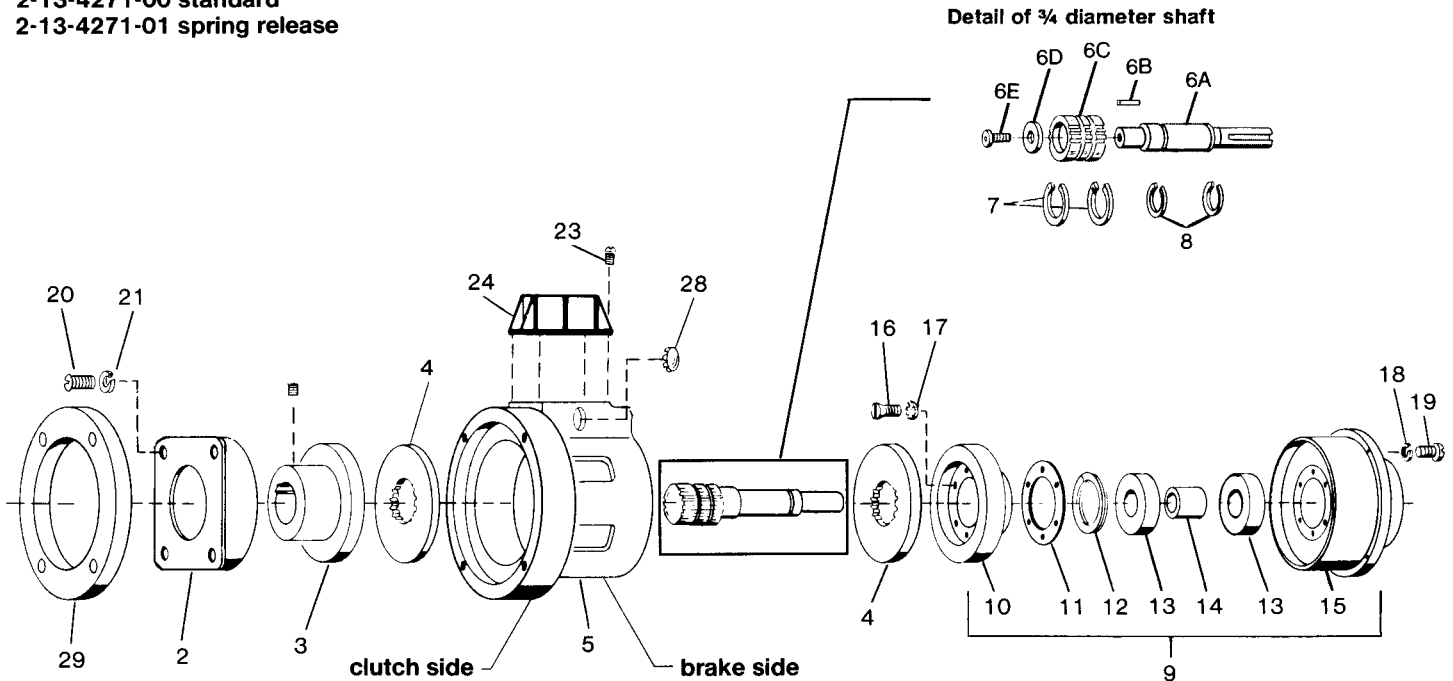


TABLE D

Item No.	Description	Part Number	Qty.
2	Magnet body and coil assembly - clutch 90-100 volts, DC	5-04-0050-01-01J	1
3	Drivehub (3/8 diameter)	5-30-0425-06-10L	1
	Drivehub (3/8 diameter)	5-30-0425-06-10O	1
4	Armature	8-405-076-03	2
5	Housing	8-443-010-01	1
6A	Shaft - brake	8-464-010-03	1
6B	Key	9-50-0813-00	1
6C	Hub	8-411-102-08	1
6D	Belleville washer	9-71-2081-01	1
6E	Screw	9-16-3008-00	1
7	Retaining ring	9-03-0013-00	2
8	Retaining ring	9-03-0033-01	2
9	Brake assembly (includes items 10 through 17)	5-40-5050-01-01J	1
10	Friction face assembly	5-30-0417-01	1
11	Spacer	8-455-118-00	1
12	Retaining ring	9-03-0080-00	1
13	Ball bearing	9-01-0023-00	2
14	Spacer	8-455-117-00	1
15	Magnet body and coil assembly - brake 90-100 volts, DC	5-04-0050-02-01J	1

TABLE D (continued)

Item No.	Description	Part Number	Qty.
16	Flat head screw	9-11-4608-00	6
17	Lock washer	9-45-0726-00	6
18	Lock washer	9-45-0327-00	6
19	Screw	9-10-2710-00	6
20	Round head screw	9-10-3010-00	4
21	Lock washer	9-45-0327-00	4
23	Self tapping screw	9-25-7309-00	4
24	Tor-ac power supply (115 VAC input)	4-1-20190-00	1
28	Snap-in blank	9-61-1150-00	1
29	Adapter - clutch side	8-445-502-00	1
<i>not shown</i>	Installation and Maintenance Sheet (Tor-ac CFCB)	8-078-800-03	1
<i>not shown</i>	Tor-ac Instruction Tag	8-078-861-00	1

TABLE E

For spring release use:		
Release spring	8-404-808-04	2 required
Cap screw	9-16-2705-00	6 required
Lock washer	9-45-0327-00	6 required

TABLE F

For case hardened armatures use in place of item 4:		
Armature	8-405-076-12	2 required