

## Parts List for Size 5 CFCBC Clutch-Brakes

Serial and model numbers from nameplate are required when ordering replacement parts.

- 2-13-4241-00 standard - 5/8" shaft
- 2-13-4241-07 spring release - 5/8" shaft
- 2-13-4241-17 standard - 7/8" shaft
- 2-13-4241-21 spring release - 7/8" shaft
- 2-13-4241-26 spring release - 5/8" shaft, case hardened armatures

See reverse side for Tor-ac model.

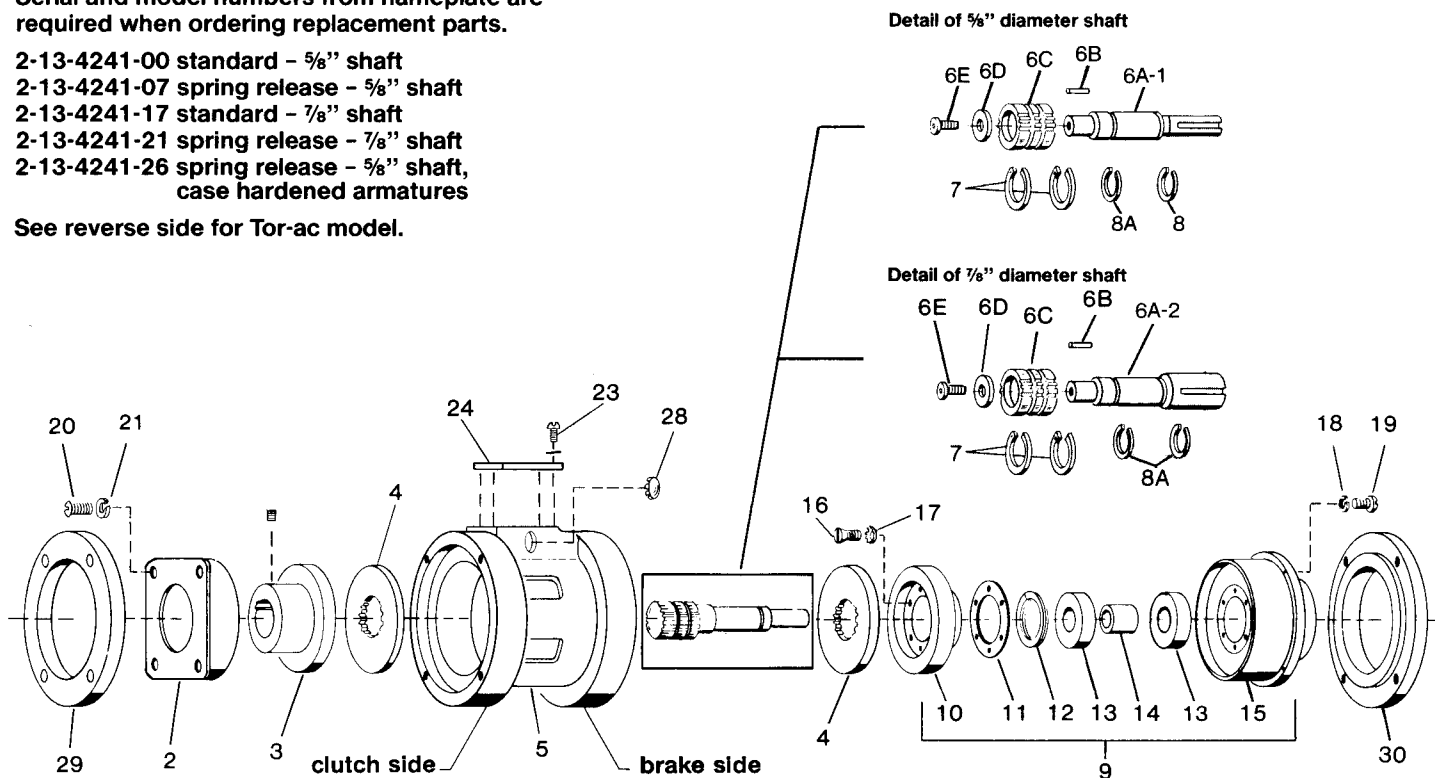


TABLE A

Item No.	Description	Part Number	Qty.	Qty.
2	Magnet body and coil assy. - clutch 90-100 volts, DC 24-28 volts, DC 12 volts, DC 6 volts, DC	5-04-0050-01-01J	1	1
		5-04-0050-01-01E	1	1
		5-04-0050-01-01C	1	1
		5-04-0050-01-01B	1	1
3	Drivehub (5/8 dia.) Drivehub (7/8 dia.)	5-30-0425-06-10L	1	
		5-30-0425-06-100		1
4	Armature	8-405-076-03	2	2
5	Housing	8-443-012-01	1	1
6A-1	Shaft - brake (5/8" diameter)	8-464-010-04	1	
6A-2	Shaft - brake (7/8" diameter)	8-464-010-05		1
6B	Key	9-50-0813-00	1	1
6C	Hub	8-411-102-08	1	1
6D	Belleville washer	9-71-2081-01	1	1
6E	Screw	9-16-3008-00	1	1
7	Retaining ring	9-03-0013-00	2	2
8	Retaining ring	9-03-0033-00	1	1
8A	Retaining ring	9-03-0033-01	1	2
9	Brake assembly (includes items 10 through 17)	5-40-5050-01-01J	1	1
		5-40-5050-01-01E	1	1
		5-40-5050-01-01C	1	1
		5-40-5050-01-01B	1	1
10	Friction face assy.	5-30-0417-01	1	1
11	Spacer	8-455-118-00	1	1
12	Retaining ring	9-03-0080-00	1	1
13	Ball bearing	9-01-0023-00	2	2
14	Spacer	8-455-117-00	1	1

TABLE A (continued)

Item No.	Description	Part Number	Qty.	Qty.
15	Magnet body and coil assy. - brake 90-100 volts, DC 24-28 volts, DC 12 volts, DC 6 volts, DC	5-04-0050-02-01J	1	1
		5-04-0050-02-01E	1	1
		5-04-0050-02-01C	1	1
		5-04-0050-02-01B	1	1
16	Flat head screw	9-11-4608-00	6	6
17	Lock washer	9-45-0726-00	6	6
18	Lock washer	9-45-0327-00	6	6
19	Fillister head screw	9-12-2710-00	6	6
20	Round head screw	9-10-3010-00	4	4
21	Lock washer	9-45-0330-00	4	4
23	Screw	9-25-7008-00	4	4
24	Nameplate	-	1	1
28	Snap-in blank	9-61-1150-00	1	1
29	Adapter - clutch side	8-445-502-00	1	1
30	Adapter - brake side	8-445-503-00	1	1
not shown	Installation and Maintenance Sheet (CFCBC)	8-078-800-04	1	1

TABLE B

For spring release use:		
Release spring	8-404-808-04	2 required
Cap screw	9-16-2705-00	6 required
Lock washer	9-45-0327-00	6 required

TABLE C

For case hardened armature use in place of item 4:		
Armature	8-405-076-12	2 required

# Parts List for Size 5 CFCBC Tor-ac® Clutch-Brakes

Serial and model numbers from nameplate are required when ordering replacement parts.

- 2-13-4281-00 standard - 5/8" shaft
- 2-13-4281-01 spring release - 5/8" shaft
- 2-13-4281-02 standard - 7/8" shaft
- 2-13-4281-03 spring release - 7/8" shaft
- 2-13-4281-04 spring release - 5/8" shaft, case hardened armatures

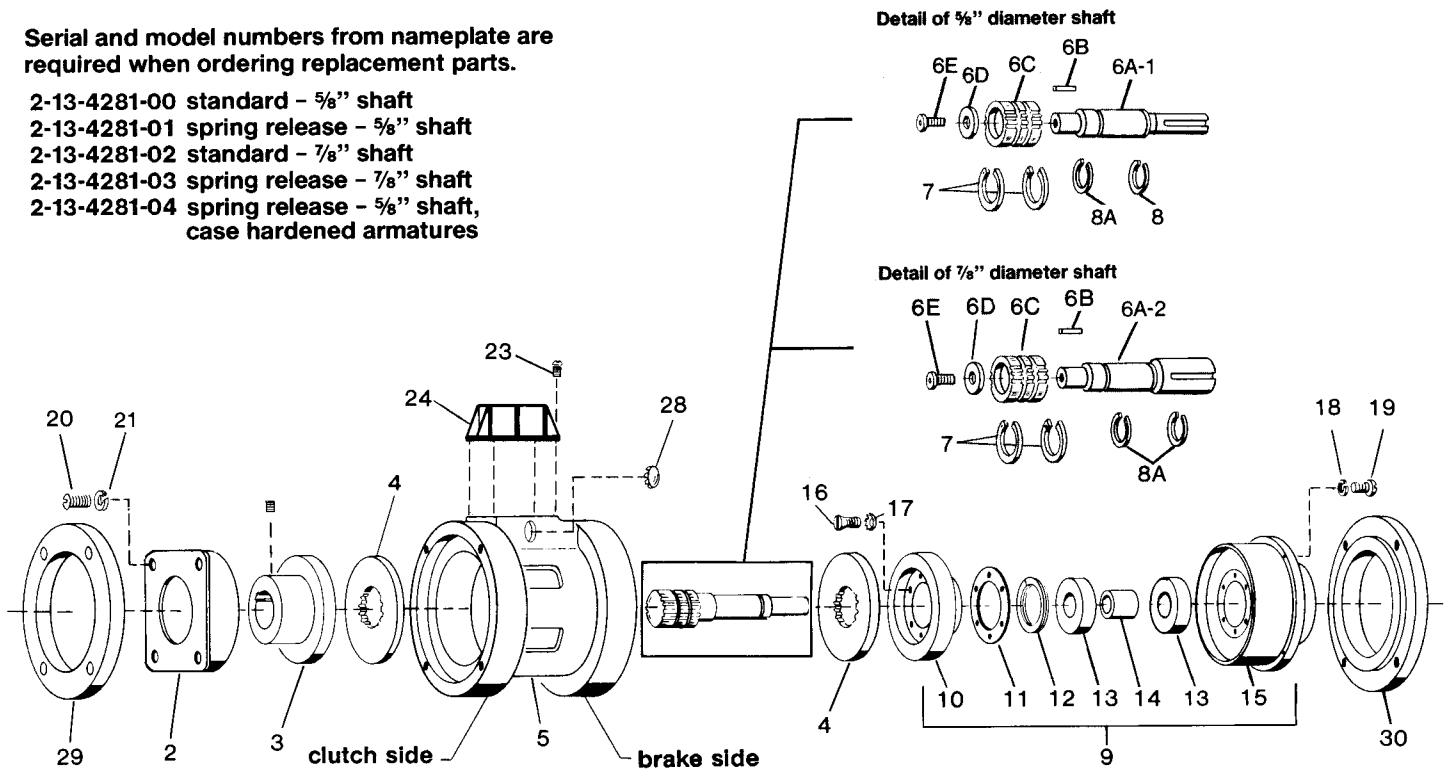


TABLE D			5/8 Dia. Shaft	7/8 Dia. Shaft
Item No.	Description	Part Number	Qty.	Qty.
2	Magnet body and coil assy. - clutch 90 - 100 volts, DC	5-04-0050-01-01J	1	1
3	Drivehub (5/8 dia.) Drivehub (7/8 dia.)	5-30-0425-06-10L 5-30-0425-06-100	1	1
4	Armature	8-405-076-03	2	2
5	Housing	8-443-012-01	1	1
6A-1	Shaft - brake (5/8" diameter)	8-464-010-04	1	
6A-2	Shaft - brake (7/8" diameter)	8-464-010-05		1
6B	Key	9-50-0813-00	1	1
6C	Hub	8-411-102-08	1	1
6D	Belleville washer	9-71-2081-01	1	1
6E	Screw	9-16-3008-00	1	1
7	Retaining ring	9-03-0013-00	2	2
8	Retaining ring	9-03-0033-00	1	1
8A	Retaining ring	9-03-0033-01	1	2
9	Brake assembly (includes items 10 through 17)	5-40-5050-01-01J	1	1
10	Friction face assy.	5-30-0417-01	1	1
11	Spacer	8-455-118-00	1	1
12	Retaining ring	9-03-0080-00	1	1
13	Ball bearing	9-01-0023-00	2	2
14	Spacer	8-455-117-00	1	1
15	Magnet body and coil assy. - brake 90 - 100 volts, DC	5-04-0050-02-01J	1	1
16	Flat head screw	9-11-4608-00	6	6
17	Lock washer	9-45-0726-00	6	6

TABLE D (continued)			5/8 Dia. Shaft	7/8 Dia. Shaft
Item No.	Description	Part Number	Qty.	Qty.
18	Lock washer	9-45-0327-00	6	6
19	Fillister head screw	9-12-2710-00	6	6
20	Round head screw	9-10-3010-00	4	4
21	Lock washer	9-45-0330-00	4	4
23	Self tapping screw	9-25-7309-00	4	4
24	Tor-ac power supply (115 VAC input)	4-1-20190-00	1	1
28	Snap-in blank	9-61-1150-00	1	1
29	Adapter - clutch side	8-445-502-00	1	1
30	Adapter - brake side	8-445-503-00	1	1
not shown	Installation and Maintenance Sheet (Tor-ac CFCBC)	8-078-800-04	1	1
not shown	Tor-ac Instruction Tag	8-078-861-00	1	1

**TABLE E**

For spring release use:		
Release spring	8-404-808-04	2 required
Cap screw	9-16-2705-00	6 required
Lock washer	9-45-0327-00	6 required

**TABLE F**

For case hardened armature use in place of item 4:		
Armature	8-405-076-12	2 required