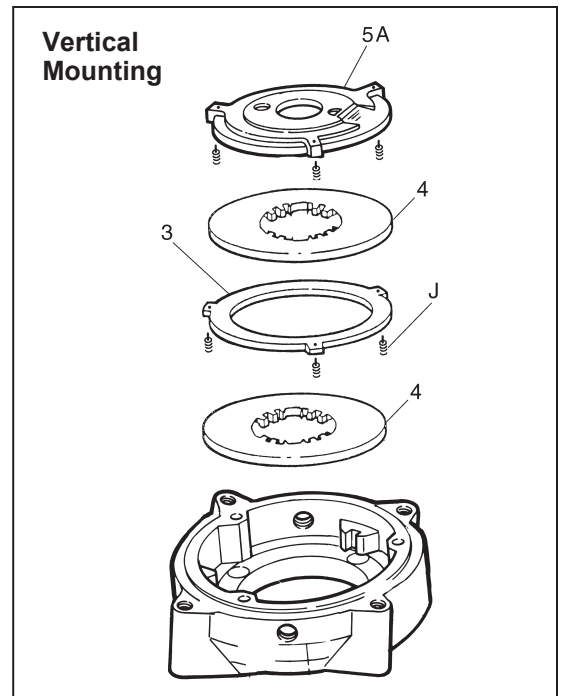
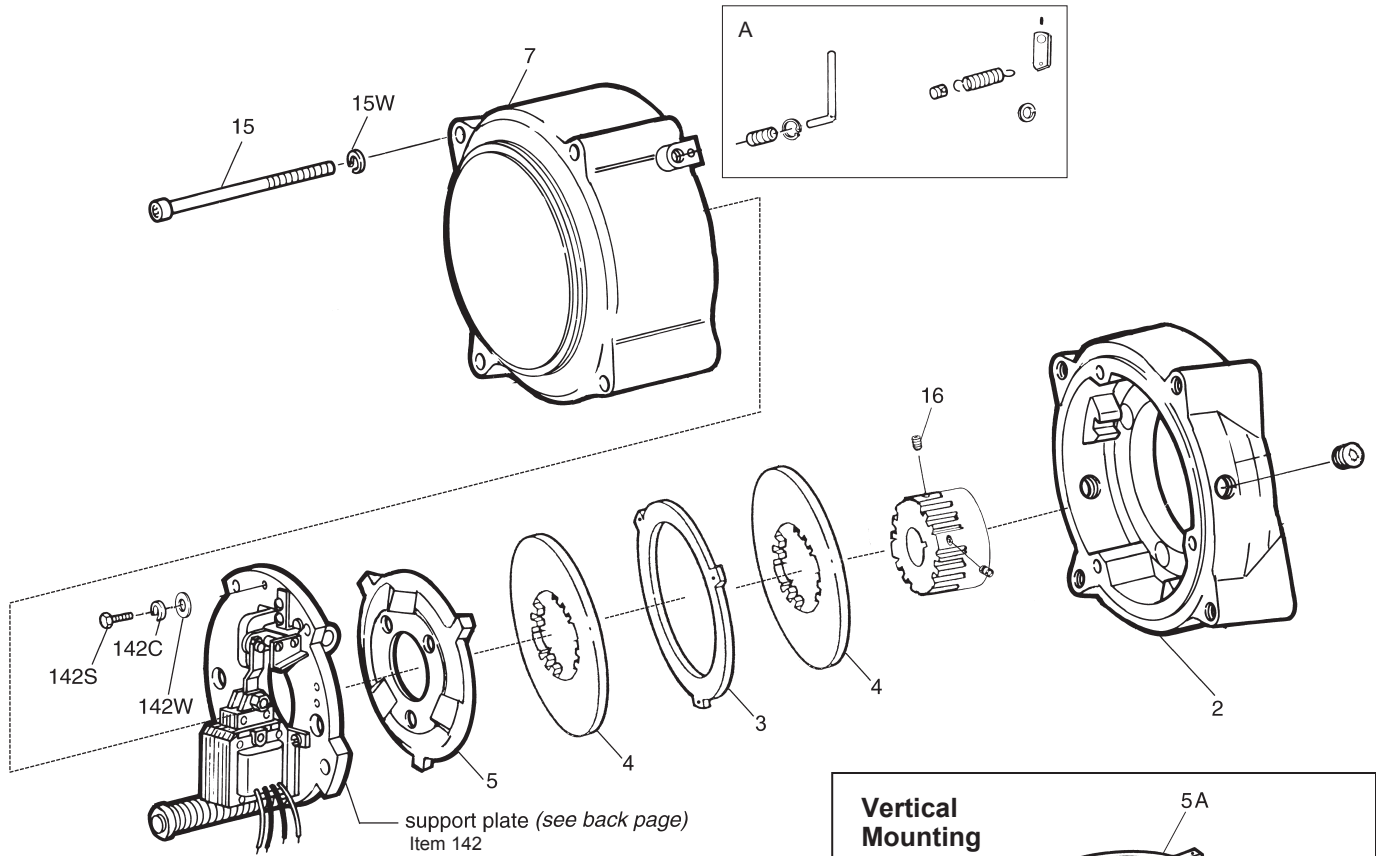


Parts List for 87,0X0 Series Brakes (rev. B)

Information required when ordering replacement parts:

- Give part number of parts or kits needed, brake model number, and brake serial number. The brake model and serial number may identify special brakes not covered by this parts list.
 - Description items in ***CAPITALIZED BOLD ITALICS*** are recommended spare parts. One set per 5 brakes in service is recommended.
 - Enclosure is designated as follows: IP56
 - Housing and manual release assembly (Item B) includes manual release kit (Item BA).
- For installation and service instructions, see Sheet 8-078-927-00. Detailed service instruction sheet is included with each kit.



Stearns®

SEE INSTALLATION AND SERVICE SHEET OR INSTALLATION LABEL INSIDE OF HOUSING BEFORE INSTALLING, OPERATING OR SERVICING BRAKE.

Model number	Rev.	Serial number
108705000GQF	B	
Torque lb-ft	Mounting	Amps inrush
Volts	Hertz	Amps holding

Reynold Industries, LLC, Stearns Division
Cudahy, WI 53110 (414) 272-1100

LR 6254

Note:
MODEL NUMBER
will appear on brake
nameplate.

REVISION CONTROL
(if applicable) and
brake serial number

TABLE 1 Components of AC and DC Brake			Brake Model Number→	1-087-030-00	1-087-040-00	1-087-050-00	1-087-060-00	1-087-080-00
			Torque (lb-ft)→	25	35	50	75	105
Item	Description	Part Number ↓						
7	Housing and Manual Release Assembly	5-07-7071-00	1	1	1	1	1	1
not shown	Pipe Plug (Drain)	9-33-0325-00	1	1	1	1	1	1
5	Pressure Plate	8-005-702-01	1	1	1	1	1	1
4	Friction Disc	5-66-8483-00	2	2	2	2	2	3
3	Stationary Disc Kit	8-003-710-01	1	1	1	1	1	2
16	Hub and Set Screw Assembly (1-1/8" bore)	5-16-7202-00-01E	1	1	1	1	1	1
	Hub and Set Screw Assembly (1-1/4" bore)	5-16-7202-00-01F						
	Hub and Set Screw Assembly (1-3/8" bore)	5-16-7202-00-01G						
	Hub and Set Screw Assembly (1-5/8" bore)	5-16-7202-00-01H						
	Hub and Set Screw Assembly (1-3/4" bore)	5-16-7202-00-01I						
	Hub and Set Screw Assembly (1-7/8" bore)	5-16-7202-00-01J						
	Hub and Set Screw Assembly (1-1/2" bore)	5-16-7202-00-01M						
	Hub and Set Screw Assembly (1-1/8" bore)	5-16-7203-00-01E						
	Hub and Set Screw Assembly (1-1/4" bore)	5-16-7203-00-01F						
	Hub and Set Screw Assembly (1-3/8" bore)	5-16-7203-00-01G						
	Hub and Set Screw Assembly (1-5/8" bore)	5-16-7203-00-01H						
	Hub and Set Screw Assembly (1-3/4" bore)	5-16-7203-00-01I						
	Hub and Set Screw Assembly (1-7/8" bore)	5-16-7203-00-01J						
	Hub and Set Screw Assembly (1-1/2" bore)	5-16-7203-00-01M						
Hub and Set Screw Assembly (1-1/2" bore)	5-16-7203-00-01M							
2	Endplate	8-002-789-42-30F	1	1	1	1		
	Endplate	8-002-790-42-30F					1	
not shown	Seal (Endplate to Hub)	9-02-0033-00	1	1	1	1	1	
not shown	Gasket and Plug Kit	5-63-0740-00	1	1	1	1	1	
2P	Pipe Plug (External Lead Wire Holes)	9-33-0914-00	1	1	1	1	1	
142S	Machine Screw 1/4-20 x 7/8" Hex Head	9-16-3014-01	3	3	3	3	3	
142C	Conical Spring Washer	9-46-0006-00	3	3	3	3	3	
142W	Flat Washer 1/4" ID x 9/16" OD	9-46-0005-00	3	3	3	3	3	
Vertical Modification (for Stationary Disc(s) see Item 3, Table 1)								
5A	Pressure Plae (Cast Iron Vertical)	8-005-702-24	1	1	1	1	1	1
J	Vertical Spring Kit (for Cast Iron)	5-66-3176-00	1	1	1	1	1	1
Brass Disc Pack (Horizontal Mounted Brake)								
5	Pressure Plate	8-005-703-01	1	1	1	1	1	1
4	Friction Disc	5-66-8483-00	2	2	2	2	2	3
3	Stationary Disc Kit	8-003-704-01	1	1	1	1	1	2
Brass Disc Pack (Vertical Mounted Brake)								
5A	Pressure Plate	8-005-703-12	1	1	1	1	1	1
4	Friction Disc	5-66-8483-00	2	2	2	2	2	3
3	Stationary Disc Kit	8-003-704-01	1	1	1	1	1	2
J	Vertical Spring Kit (for Brass)	5-66-3177-00	1	1	1	1	1	1

TABLE 2
Components of Support Plate and Coil Assembly

Item	Description	Part Number	Torque (lb-ft)	
			25 50	35 75 105
126	Support plate and bearing assembly	5-26-7007-00	1	1
22	Solenoid lever stop	8-022-203-00	1	1
76	Wrap spring stop	8-076-703-00	1	1
76S	Screw (wrap spring stop) 10-24 x 1/2	9-25-7331-00	2	2
8	SOLENOID LEVER AND PINION KIT	5-66-7371-00	1	1
170	Release plate	8-170-706-01	1	1
170N	Nut (release plate) 1/4 x 20	9-40-3730-00	2	2
170S	Cap screw (release plate)	9-15-1031-00	2	2
171	Spacer (release plate)	8-141-707-00	2	2
17	Lever arm assembly	5-17-7005-00	1	1
130	Pivot pin (lever arm)	9-32-3111-00	1	1
152P	Pivot pin (spring tube)	9-32-4059-00	1	1
130B	Bearing (washer type)	8-138-701-00	2	2
19 & 152	Pressure spring tube kit	5-66-7471-00	1	1
11	Pressure spring kit – orange Pressure spring kit – purple	5-66-3076-00 5-66-3078-00	1	1
AC Brakes				
U	NO. 6 AC SOLENOID KIT NO. 8 AC SOLENOID KIT	5-66-5061-00 5-66-5081-00	1	1
13B	Solenoid link Solenoid link	8-013-708-00 8-013-709-00	1	1
V	NO. 6 COIL KIT 60 HZ	115/230 Vac	5-66-6607-33	1
		230/460 Vac	5-66-6609-33	1
V	NO. 8 COIL KIT 60 HZ	115 Vac	5-66-6601-33	1
		230 Vac	5-66-6602-33	1
		460 Vac	5-66-6604-33	1
		575 Vac	5-66-6605-33	1
		115/230 Vac	5-66-6807-33	
V	NO. 8 COIL KIT 60 HZ	230/460 Vac	5-66-6809-33	1
		115 Vac	5-66-6801-33	1
		230 Vac	5-66-6802-33	1
		460 Vac	5-66-6804-33	1
		575 Vac	5-66-6805-33	1
XX**	Brake release interlock switch	5-57-5517-00	1	1
DC Brakes				
VV	No. 6 Coil Assembly	115 Vdc	5-96-6616-33	1
		230 Vdc	5-96-6617-33	1
VV	No. 8 Coil Assembly	115 Vdc	5-96-6816-33	1
		230 Vdc	5-96-6817-33	1
X	Electronic DC Switch Kit	115 Vdc	5-57-5716-07	1
		230 Vdc	5-57-5717-07	1

**AC brakes with the brake release interlock (N.O.) switch Item XX use Item W solenoid assembly for switch mounting in place of Item U.

TABLE 4
Complete support plate assembly*

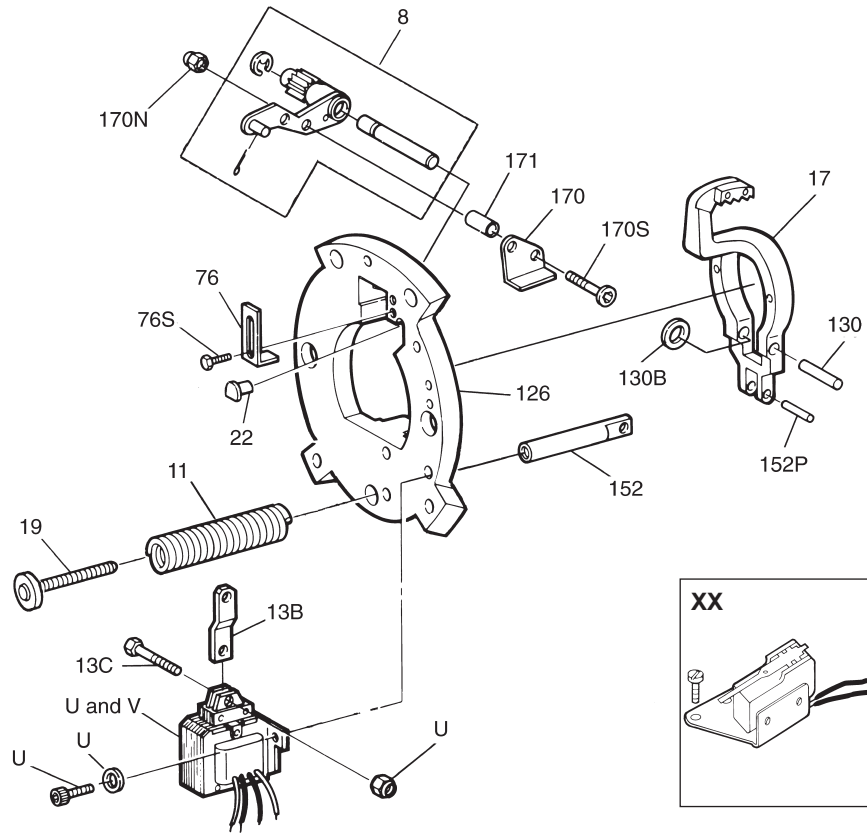
Item 142		AC	DC
		25/50 lb-ft	5-42-7095-00-26
35 lb-ft	5-42-7093-00-26	Consult Factory	
75/105 lb-ft	5-42-7097-00-28	Consult Factory	

*All items shown in Table 2 except for coil kit.

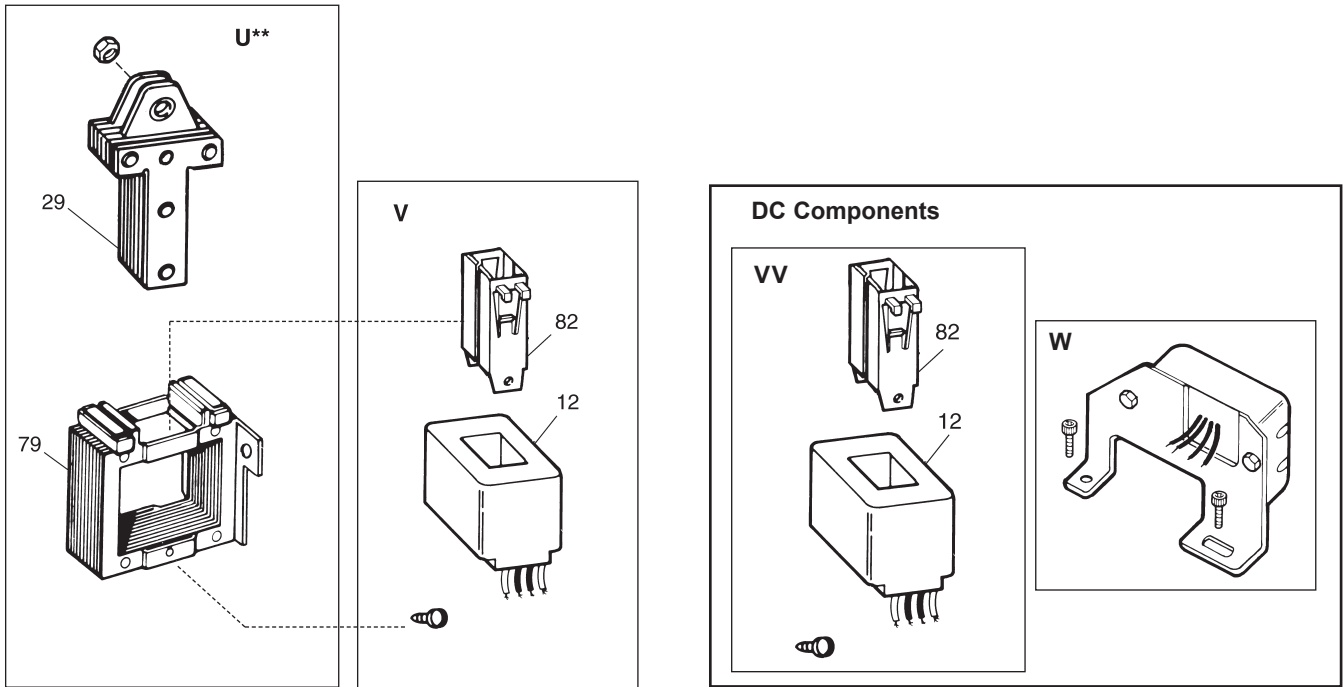
TABLE 3
Contents of Kits and Assemblies (contents may vary)

Letter Designation	Kit Description
4	Friction disc kit – splined (5-66-8483-00) 1 – Friction disc
3	Stationary disc kit (5-66-8372-00) 1 – Stationary disc
J	Vertical above spring and spacer kit (5-66-3171-00) 9 – Vertical above mounting springs 9 – Vertical above spring spacers
8	Solenoid lever and pinion kit (5-66-7371-00) 1 – Solenoid lever and pinion assembly 1 – Cotter pin 1 – Solenoid lever pivot pin 1 – Pivot pin retaining ring
19 & 152	Pressure spring tube kit (5-66-7471-00) 1 – Pressure spring tube 1 – Pressure spring screw 1 – Spring tube pivot pin
11	Pressure spring kit (5-66-307X-00) 1 – Pressure spring
U	AC solenoid kit (5-66-50XX-00) 1 – Plunger 1 – Frame 3 – Solenoid mounting screws 3 – Solenoid mounting conical spring washers 1 – Solenoid link nut 1 – Drive lock pin (for #8 solenoid only) (<i>not shown</i>) 1 – Washer (for #8 solenoid only) (<i>not shown</i>)
V	Coil kits (5-66-6XXX-33) AC coils 1 – Coil 2 – Plunger guides 2 – Plunger guide screws
VV	Coil assembly (5-96-6XXX-33) DC coils 1 – Coil 2 – Plunger guides 2 – Plunger guide screws
W	DC solenoid assembly (5-66-50X1-00) 1 – Plunger 1 – Frame 3 – Solenoid mounting screws 3 – Conical spring washers 1 – Solenoid link nut 1 – Cable clamp and screw
X	DC switch assembly (5-57-5716-07 or 5-57-5717-07) 1 – DC switch 2 – Mounting screws 2 – Lock washers
XX	AC switch assembly (5-57-5528-00) (brake release interlock switch – N.O.) 1 – AC switch 2 – Mounting screws 2 – Lock washers

Support Plate Assembly Item 142



Solenoid and Coil



Rexnord Industries, LLC
 Stearns Division
 5150 International Dr.
 Cudahy, Wisconsin 53110
 (414) 272-1100 Fax: (414) 277-4364 www.stearnsbrakes.com