

87,000 Series

Re-setting the self adjust lever arm position

Important

Please read these instructions carefully before installing, operating, or servicing your Stearns brake. Failure to comply with these instructions could cause injury to personnel and/or damage to property if the brake is installed or operated incorrectly. For definition of limited warranty/liability, contact Rexnord Industries, Inc., Stearns Division, 5150 S International Dr, Cudahy, WI 53110, (414) 272-1100.

Caution

1. Installation and servicing must be made in compliance with all local safety codes including Occupational Safety and Health Act (OSHA). All wiring and electrical connections must comply with the National Electric Code (NEC) and local electric codes in effect.
2. Do not install the brake in atmospheres containing explosive gases or dusts.
3. To prevent an electrical hazard, disconnect power source before working on the brake. If power disconnect point is out of sight, lock disconnect in the *off* position and tag to prevent accidental application of power.
4. Make certain power source conforms to the requirements specified on the brake nameplate.
5. Be careful when touching the exterior of an operating brake. Allow sufficient time for brake to cool before disassembly. Surfaces may be hot enough to be painful or cause injury.
6. Do not operate brake with housing removed. All moving parts should be guarded.

7. Installation and servicing should be performed only by qualified personnel familiar with the construction and operation of the brake.
8. For proper performance and operation, only genuine Stearns parts should be used for repairs and replacements.
9. After usage, the brake interior will contain burnt and degraded friction material dust. This dust must be removed before servicing or adjusting the brake.

DO NOT BLOW OFF DUST using an air hose. It is important to avoid dispersing dust into the air or inhaling it, as this may be dangerous to your health.

- a) Wear a filtered mask or a respirator while removing dust from the inside of a brake.
- b) Use a vacuum cleaner or a soft brush to remove dust from the brake. When brushing, avoid causing the dust to become airborne. Collect the dust in a container, such as a bag, which can be sealed off.

Re-setting the lever arm position

Warning! Any mechanism or load held in position by the brake should be secured to prevent possible injury to personnel or damage to equipment before any disassembly of the brake is attempted or before the manual release knob or lever is operated on the brake.

The rack and pinion operate on the last two gear rack teeth (A). With a new, unworn, disc pack:

- The lever arm (17) should be up and parallel to the support plate (126).
- Air gap (B) should be set at 7/8 to 15/16 and allow to settle to a repeatable air gap.

Before disassembly, fix the plunger into the solenoid to keep the lever arm in position. If the lever arm traveled forward, repositioning is necessary. Eventually, with disc wear, the lever arm will travel forward on its own. Once the lever arm is in the correct position, band the plunger into the solenoid or place a rod under the lever arm at the support plate until the plate assembly is fastened to the endplate with the disc pack in place. Be sure to remove banding or rod at re-assembly.

Check for wear on the rack and pinion that would cause binding. If the lever arm is out of position, re-set by one of two methods.

Method One:

Place a screwdriver under the lever arm (17) at (C) and pry the lever arm back up the rack to position (A). Band the solenoid plunger assembly until the brake is re-assembled.

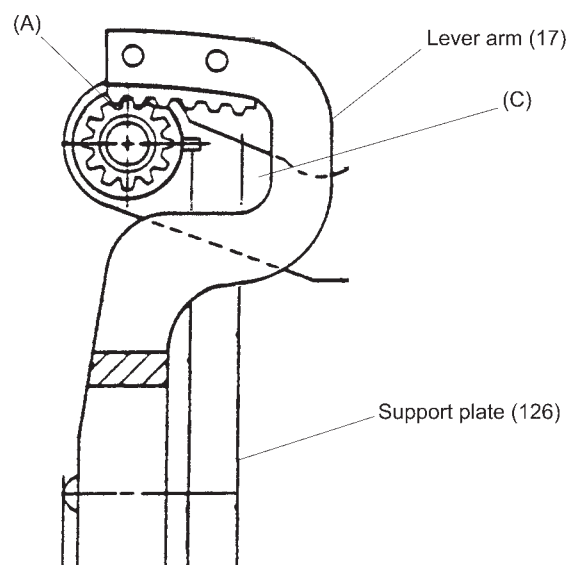
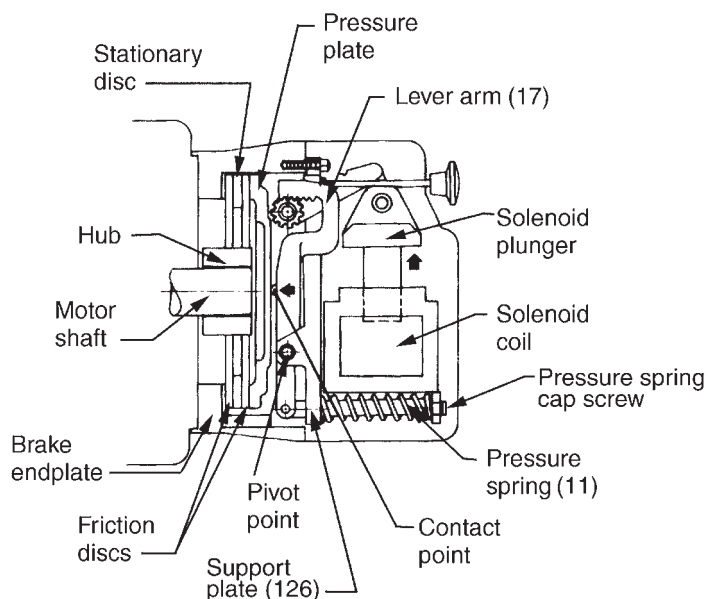
Method Two:

Loosen pressure spring cap screw (19) until pressure spring (11) is free, and reposition the lever arm. By rod or band, keep the plunger in the solenoid until after brake re-assembly. Tighten spring cap screw (19) until snug. Do not overtighten! Torque to a maximum of 8 ft-lbs.

Two key points:

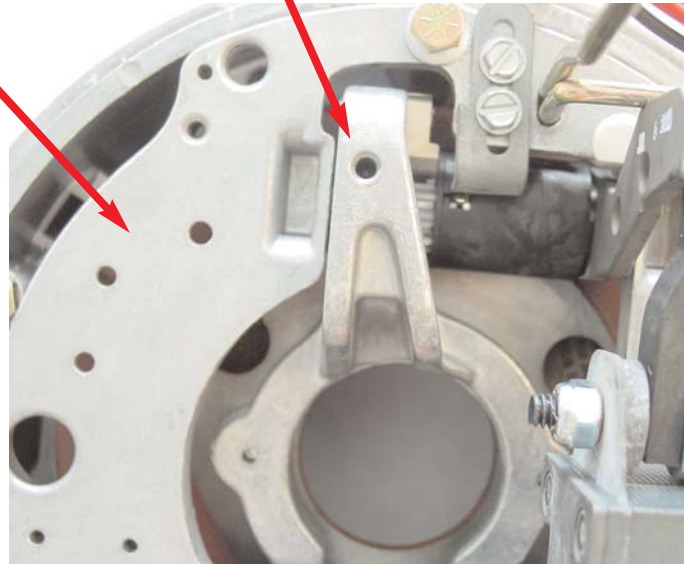
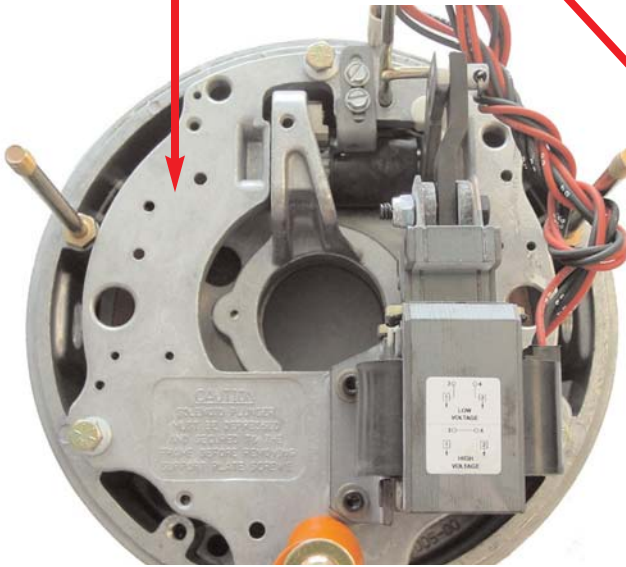
- Action occurs at (A) with a new disc pack
- Air gap should be repeatable between 7/8 and 15/16

Select here for instructions on setting the air gap.



Item 126 Support plate

Item 17 Lever arm



(A)

(C)

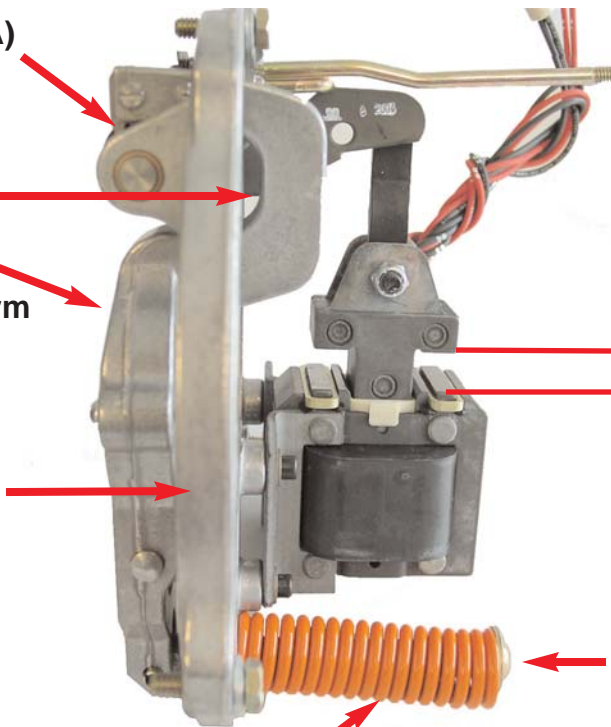
**Item 17
Lever arm**

**Item 126
Support
Plate**

Air Gap

**Item 19
Pressure Spring
Cap Screw**

**Item 11
Pressure Spring**



(A)

