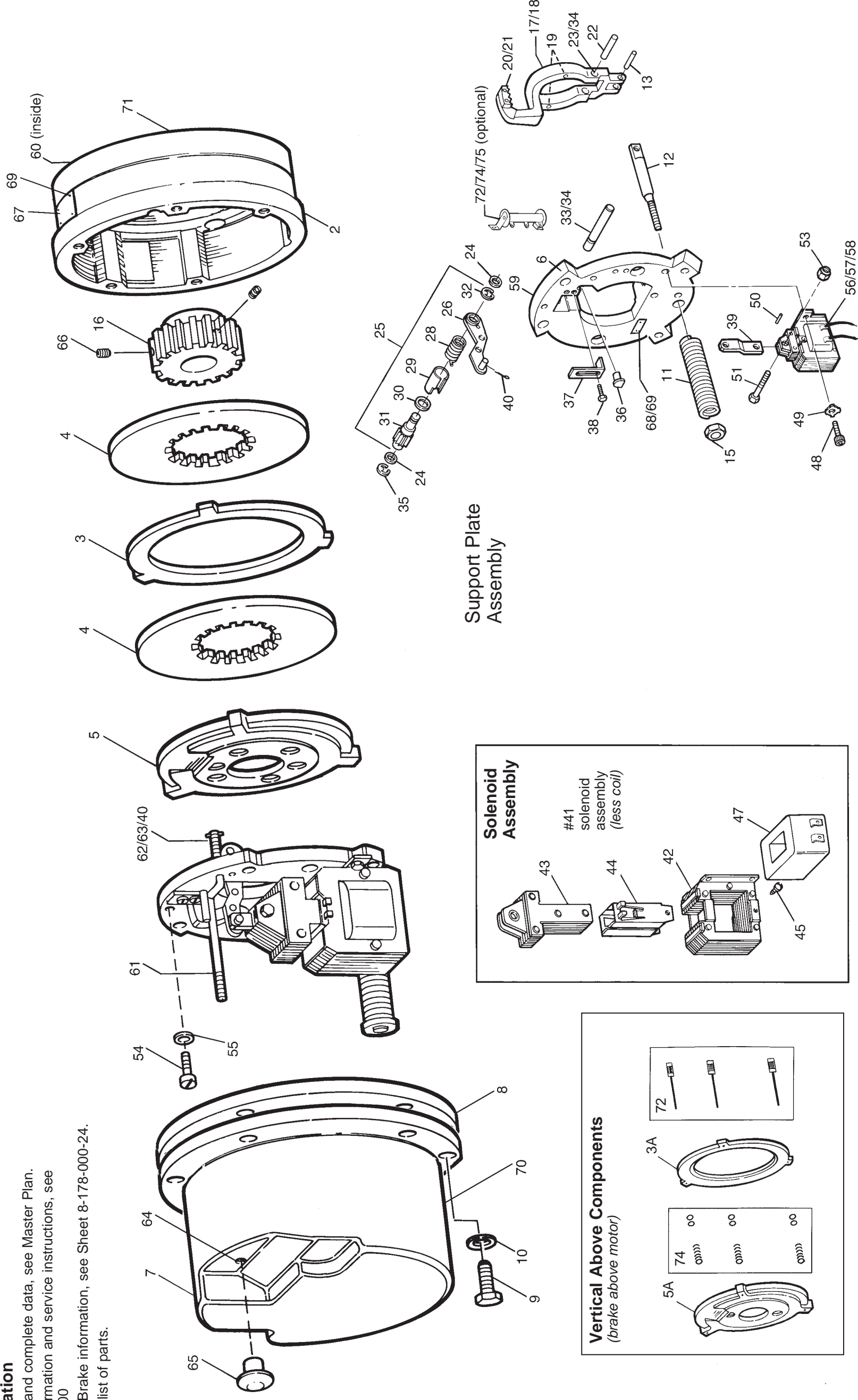


Navy Brake - 87,600 Series Exploded View Part Breakdown

Supplement to Master Plan N1-087-602-A & N1-087-602-B

General Information

- For part numbers and complete data, see Master Plan.
- For additional information and service instructions, see Sheet 8-078-927-00
- For general Navy Brake information, see Sheet 8-178-000-24.
- See back side for list of parts.



Item No.	Description	Torque (lb-ft)		10	15	25	35	50	75	105	
		Brake Model Number →	Manufacturer's Part Number ↓								
				1-087-612-00	1-087-622-00	1-087-632-00	1-087-642-00	1-087-652-00	1-087-662-00	1-087-682-00	
2	Endplate Endplate Endplate			1	1	1	1	1	1	1	
3	Stationary disc							1	1	2	
4	Friction disc			1	1	1	1	2	2	3	
5	Pressure plate			1	1	1	1	1	1	1	
6	Support plate			1	1	1	1	1	1	1	
7	Housing			1	1	1	1	1	1	1	
8	Gasket			1	1	1	1	1	1	1	
9	Cap screw, hex head (3/8 - 16 x 1 1/4)			7	7	7	7	7	7	7	
10	Lock washer, spring (3/8)			7	7	7	7	7	7	7	
14	Washer			1	7	4	3	4	3	3	
11	Pressure spring - (black) (formerly blue)			1							
	Pressure spring - (white)				1						
	Pressure spring - (orange)					1		1	1	1	
	Pressure spring - (purple)										
12	Pressure spring stud			1	1	1	1	1	1	1	
13	Pivot pin (spring stud)			1	1	1	1	1	1	1	
15	Pressure spring nut			1	1	1	1	1	1	1	
16, 66	Hub and set screw assembly			1	1	1	1	1	1	1	
	Hub and set screw assembly							1	1	1	
	Hub and set screw assembly										
17	Lever arm assembly			1	1	1	1	1	1	1	
18	Lever arm (part of 17)			1	1	1	1	1	1	1	
19	Drive screw (part of 17)			2	2	2	2	2	2	2	
20	Sector gear (part of 17)			1	1	1	1	1	1	1	
21	Straight pin (part of 17)			2	2	2	2	2	2	2	
22	Pivot pin (lever arm)			1	1	1	1	1	1	1	
23	Sleeve bearing			1	1	1	1	1	1	1	
24	Washer, flat			4	4	4	4	4	4	4	
25	Solenoid lever and pinion assembly			1	1	1	1	1	1	1	
26	Solenoid lever (part of 25)			1	1	1	1	1	1	1	
28	Wrap spring (part of 25)			1	1	1	1	1	1	1	
29	Sleeve (part of 25)			1	1	1	1	1	1	1	
30	Spacer (part of 25)			1	1	1	1	1	1	1	
31	Pinion (part of 25)			1	1	1	1	1	1	1	
32	Retaining ring (part of 25)			1	1	1	1	1	1	1	
33	Pivot pin (solenoid lever)			1	1	1	1	1	1	1	
34	Sleeve bearing			2	2	2	2	2	2	2	
35	Retaining ring			1	1	1	1	1	1	1	
36	Stop (solenoid lever)			1	1	1	1	1	1	1	
37	Stop (wrap spring)			1	1	1	1	1	1	1	
38	Machine screw, round head (#10 - 24 x 1/2)			2	2	2	2	2	2	2	
39	Solenoid link			1	1	1	1	1	1	1	
	Solenoid link										
40	Cotter pin			2	2	2	2	2	2	2	
41	Solenoid frame (less coil)			1	1	1	1	1	1	1	
	Solenoid frame (less coil)										
42	Solenoid assembly (part of 41)			1	1	1	1	1	1	1	
	Solenoid assembly (part of 41)										
43	Solenoid plunger (part of 41)			1	1	1	1	1	1	1	
	Solenoid plunger (part of 41)										
44	Coil holder (part of 41)			2	2	2	2	2	2	2	
	Coil holder (part of 41)										
45	Plunger screw (part of 41)			2	2	2	2	2	2	2	
	Plunger screw (part of 41)										

Item No.	Description	Torque (lb-ft)		10	15	25	35	50	75	105	
		Brake Model Number →	Manufacturer's Part Number ↓								
				1-087-612-00	1-087-622-00	1-087-632-00	1-087-642-00	1-087-652-00	1-087-662-00	1-087-682-00	
47	Coil 115 V/60 Hz 115 V/60 Hz 230 V/60 Hz 230 V/60 Hz 440 V/60 Hz 440 V/60 Hz 460 V/60 Hz 460 V/60 Hz			1	1	1	1	1	1	1	
	Coil kit (includes items 44, 45, 56, 57 & 58)										
47	115 V/60 Hz 115 V/60 Hz 230 V/60 Hz 230 V/60 Hz 440 V/60 Hz 440 V/60 Hz 460 V/60 Hz 460 V/60 Hz			1	1	1	1	1	1	1	
	5-96-6601-05 5-96-6801-05 5-96-6602-05 5-96-6802-05 5-96-6604-15 5-96-6804-15 5-96-6604-05 5-96-6804-05			1	1	1	1	1	1	1	
48	Cap screw, socket head (3/8 - 16 x 5/8)			3	3	3	3	3	3	3	
49	Lock washer, Belleville (3/8)			3	3	3	3	3	3	3	
50	Drive-lok pin, Type B			1	1	1	1	1	1	1	
51	Cap screw			1	1	1	1	1	1	1	
	8-157-702-00										
	Cap screw										
	8-157-703-00										
53	Elastic stop nut										
	9-40-3730-00										
	Elastic stop nut										
	9-40-3732-00										
54	Cap screw, socket head (3/8 - 16 x 1 1/4)			5	5	5	5	5	5	5	
55	Lock washer, spring (3/8)			5	5	5	5	5	5	5	
56	Lead wire and terminal assembly			2	2	2	2	2	2	2	
57	Machine screw, binding head (#6 - 32 x 1/4)			2	2	2	2	2	2	2	
58	Lock washer, spring (#6)			2	2	2	2	2	2	2	
59	Lead wire bushing (support plate)			1	1	1	1	1	1	1	
60	Lead wire bushing (endplate)			1	1	1	1	1	1	1	
	8-140-002-06										
	Lead wire bushing (endplate)										
	8-140-002-08										
	Lead wire bushing (endplate)										
	8-140-002-10										
61	Release rod			1	1	1	1	1	1	1	
62	Release spring			1	1	1	1	1	1	1	
63	Washer, flat			1	1	1	1	1	1	1	
64	Oil seal			1	1	1	1	1	1	1	
65	Release knob			1	1	1	1	1	1	1	
67	Nameplate			1	1	1	1	1	1	1	
68	Instruction plate			1	1	1	1	1	1	1	
69	Drive screw, Type U			6	6	6	6	6	6	6	
70	Pipe plug (drain) 1/4"			1	1	1	1	1	1	1	
71	Oil seal			1	1	1	1	1	1	1	
72	Space heater (optional)			1	1	1	1	1	1	1	
74	Cap screw, hex head			2	2	2	2	2	2	2	
75	Lock washer, #10 conical			2	2	2	2	2	2	2	
	Support plate assembly (less coil)			1	1	1	1	1	1	1	
	Support plate assembly (less coil)										
	Support plate assembly (less coil)										
	Support plate assembly (less coil)										
Vertical Above Modification											
72	Pin Kit 1 Disc			3	3	3	3	3	3	3	
	2 Disc										
	3 Disc										
74	Spring Kit			1	1	1	1	1	1	1	
3A	Stationary Disc Horizontal/Vertical										
5A	Pressure Plate Vertical			1	1	1	1	1	1	1	